



1/5-11 Samuel Terry Avenue Kensington NSW

2 1 1

- ? Manicured garden entry leading into a terrazzo foyer, this apartment has dual entry.
- ? Large living space with high ceilings and well preserved hardwood flooring
- ? Open plan kitchen with laundry facilities seamlessly connects to the outdoor common area
- ? Two double sized bedrooms with built in robes
- ? Light and airy interiors with windows on three sides
- ? Easy access to large, level communal gardens offering a secure haven for the family to enjoy
- ? Well presented with scope to enhance
- ? Commuting to the CBD is a breeze with excellent transport links around the corner

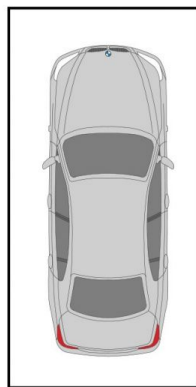
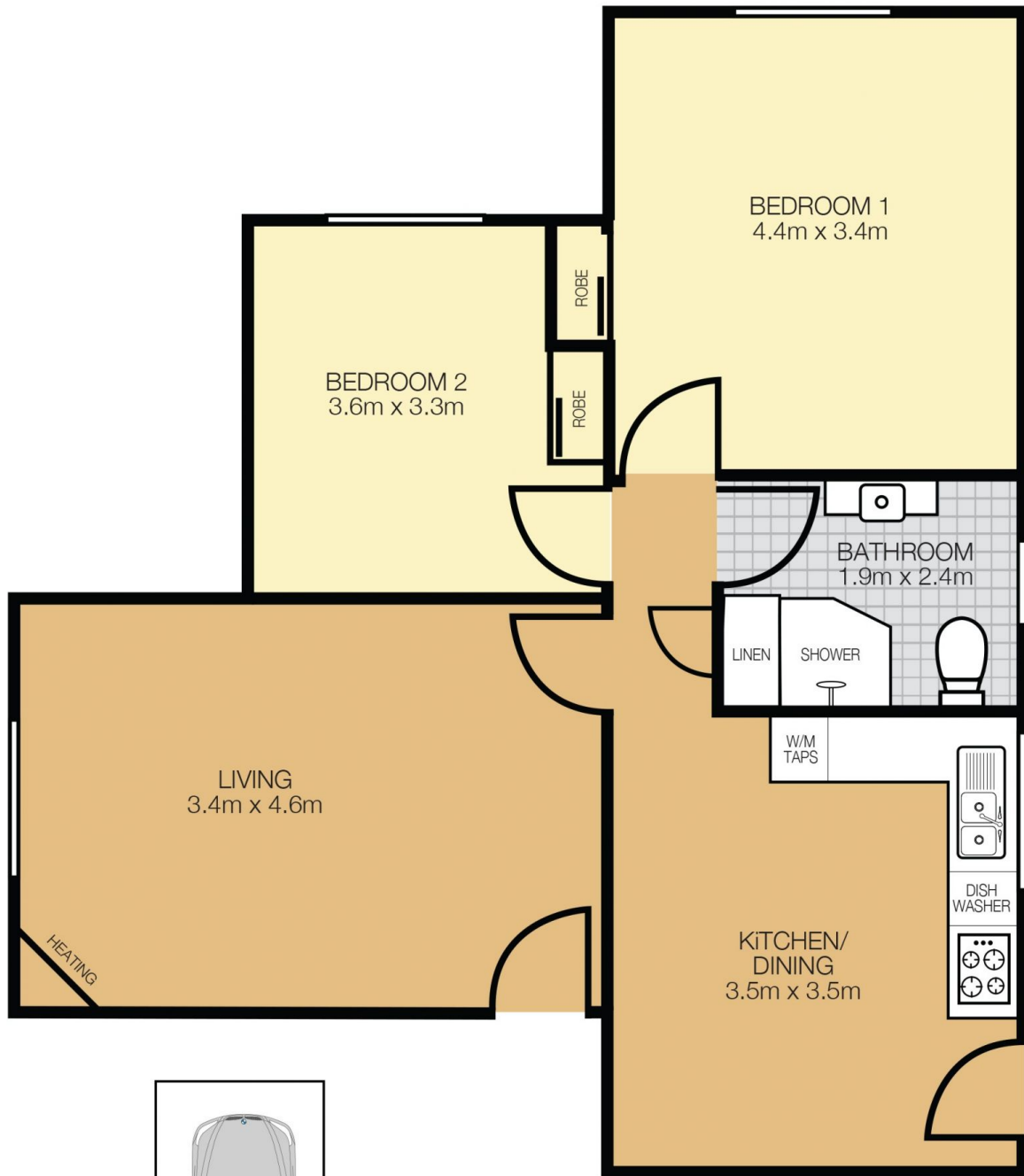
Type : Apartment

View : <https://www.reconstructrealestate.com.au/sale/nsw/eastern-suburbs/kensington/residential/apartment/8133873>



James Kennedy
02 9346 2010

[For full version visit the website](https://www.reconstructrealestate.com.au)



UNDERCOVER
CARSPACE

REAL ESTATE
reconstruct

1/5-11 Samuel Terry Ave Kensington

 2
  1
  1

Disclaimer: Floor Plan measurements are approximate and are for illustrative purposes only. While we do not doubt the floor plans accuracy, we make no guarantee, warranty or representation as to the accuracy and completeness of the floor plan. You or your advisors should conduct a careful, independent investigation of the property to determine to your satisfaction as to the suitability of the property for your space requirements.